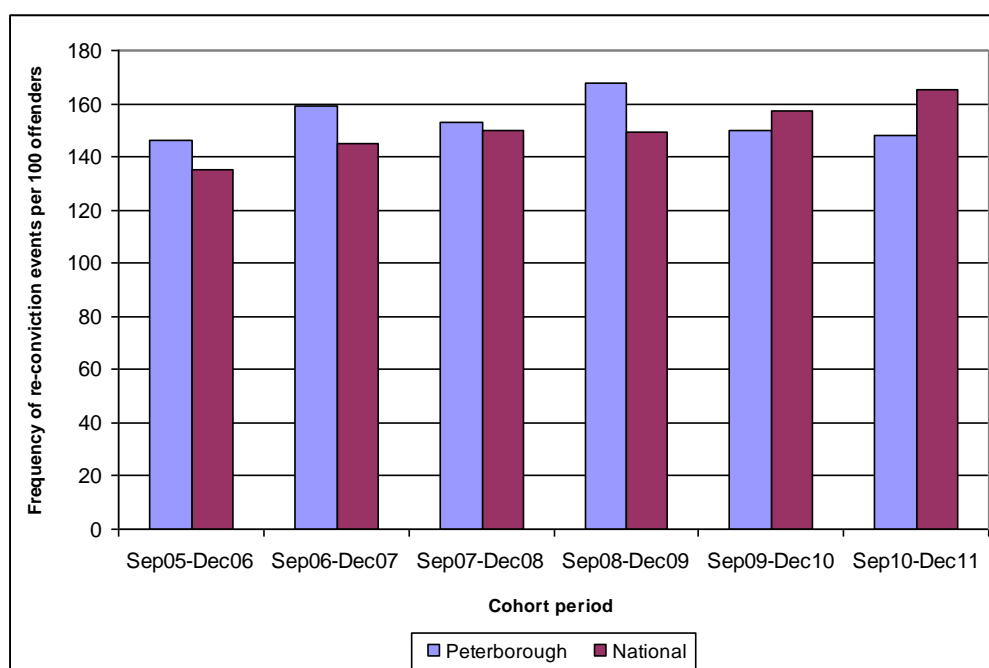


## PETERBOROUGH INTERIM FIGURES – 31 OCTOBER 2013

The Ministry of Justice has published interim figures for Peterborough this morning (31 October 2013). The figures track the frequency of reconvictions events over twelve months of the first 16 months of the first cohort of the Peterborough Social Impact Bond for the first time. This is compared to a national frequency rate. Please see the tables below.

**Table 1 and Figure 1: Peterborough (and national equivalent) interim re-conviction figures using a partial (16 month) cohort and a 12 month re-conviction period**

Discharge Period	Peterborough			National		
	No. of offenders	Re-conviction Rate	Frequency of re-conviction events per 100 offenders	No. of offenders	Re-conviction Rate	Frequency of re-conviction events per 100 offenders
Sep05-Dec06	611	57.1%	146	25,982	56.9%	135
Sep06-Dec07	735	57.8%	159	25,463	57.8%	145
Sep07-Dec08	899	56.2%	153	28,737	57.8%	150
Sep08-Dec09	853	55.3%	168	28,673	56.0%	149
Sep09-Dec10	732	53.1%	150	26,810	56.2%	157
Sep10-Dec11	694	52.6%	148	25,793	56.5%	165



Source: [https://www.gov.uk/government/uploads/system/uploads/attachment\\_data/file/254186/annex-a-payment-by-results-oct13.pdf](https://www.gov.uk/government/uploads/system/uploads/attachment_data/file/254186/annex-a-payment-by-results-oct13.pdf)



The figures suggest that there has been a 12% decline in the frequency of convictions events per 100 prisoners since 2008 in Peterborough alongside a 11% increase nationally.

We cannot infer from the figures whether the pilot has been a success or whether an outcome payment will be triggered because the measurements used are distinct from those which will be used for the Peterborough Social Impact Bond. The Peterborough cohort will be compared by an independent assessor with a statistically compiled control group.

The first results of the Peterborough Social Impact Bond are expected in April 2014.

Social Finance notes the suggestion that the progress of the Peterborough Social Impact Bond supports the case for the Transforming Rehabilitation initiative.

The Peterborough Social Impact Partnership was established to test the proposition that providing additional sustained support to short sentenced male offenders pre and post release. This would address a clear and unmet need and improve their lives in a way which would reduce their tendency to re-offend and thereby generate benefits for society and the taxpayer.

Short sentenced male offenders are a specific segment of the prison population who currently receive no support from probation or any other statutory body. We are encouraged that as part of its plan for Transforming Rehabilitation, the Government plans to extend statutory support to this vulnerable group and that the Peterborough Social Impact Partnership may have played a role in highlighting the importance of addressing this unmet need.

However, although the precise details are not yet clear, Transforming Rehabilitation also envisages a much wider restructuring of the delivery of existing probation services which support the broader prison population. The success or otherwise of the Peterborough pilot is of limited relevance to assessing the merits of these changes.

*For more information, please contact Alisa Helbitz, Communications Director, on 07500 433 044 or [www.socialfinance.org.uk](http://www.socialfinance.org.uk) / @socfinuk*